

ADAPTERS

DESCRIPTION

Optical Fiber Adapter is used to mate two connectors, usually mounted in a distribution panel or wall box. It is a precision components made from zirconia ceramic to ensure the perfect alignment of connectors and reduced insertion loss for both SM and MM fibers. In most cases, the split sleeve is the critical part of the system that aligns the ferrule part of connector, keeping the fibers in perfect alignment.

In the case of MT-RJ, the alignment is carried out by two guide pins fitted into one of the connectors. The adapter is purely to support and lock the connectors together in the distribution panel or wall box.

APPLICATIONS

- Patch panels, faceplates and fiber adapter panels
- Faceplates
- Surface mount boxes and enclosures
- LANs
- Public networks
- Storage area networks
- Fiber to-the-desk applications
- Inline connections

FEATURES

- Available in FC, SC, ST, LC, MU, MT-RJ and MPO
- Standard latch type design to lock two connectors to each other^{*1}
- Available in Simplex, Duplex, Quad (LC) and Hybrid versions
- Contamination prevention by dust caps
- High precision sleeves for both SM and MM fibers
- Low insertion loss
- Operating temperature in compliance with IEC 61753-1 Table A.1
- High repeatability and stability

FC ADAPTER

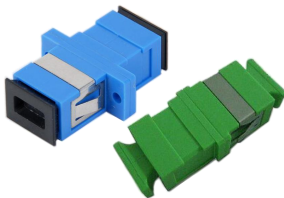


FC Square



FC Round D-Type

SC ADAPTER



SC Simplex



SC Duplex

MT-RJ & MPO ADAPTER

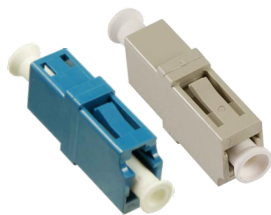


MT-RJ

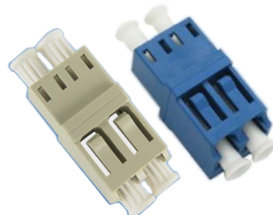


MPO

LC & MU ADAPTER



LC Simplex



LC Duplex



LC Duplex with SC Foot-print



MU Adapter

ST & SMA ADAPTER



ST Adapter

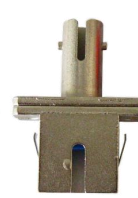


SMA Adapter

HYBRID ADAPTER



LC/SC



SC/ST



SC/FC



FC/ST

Note:

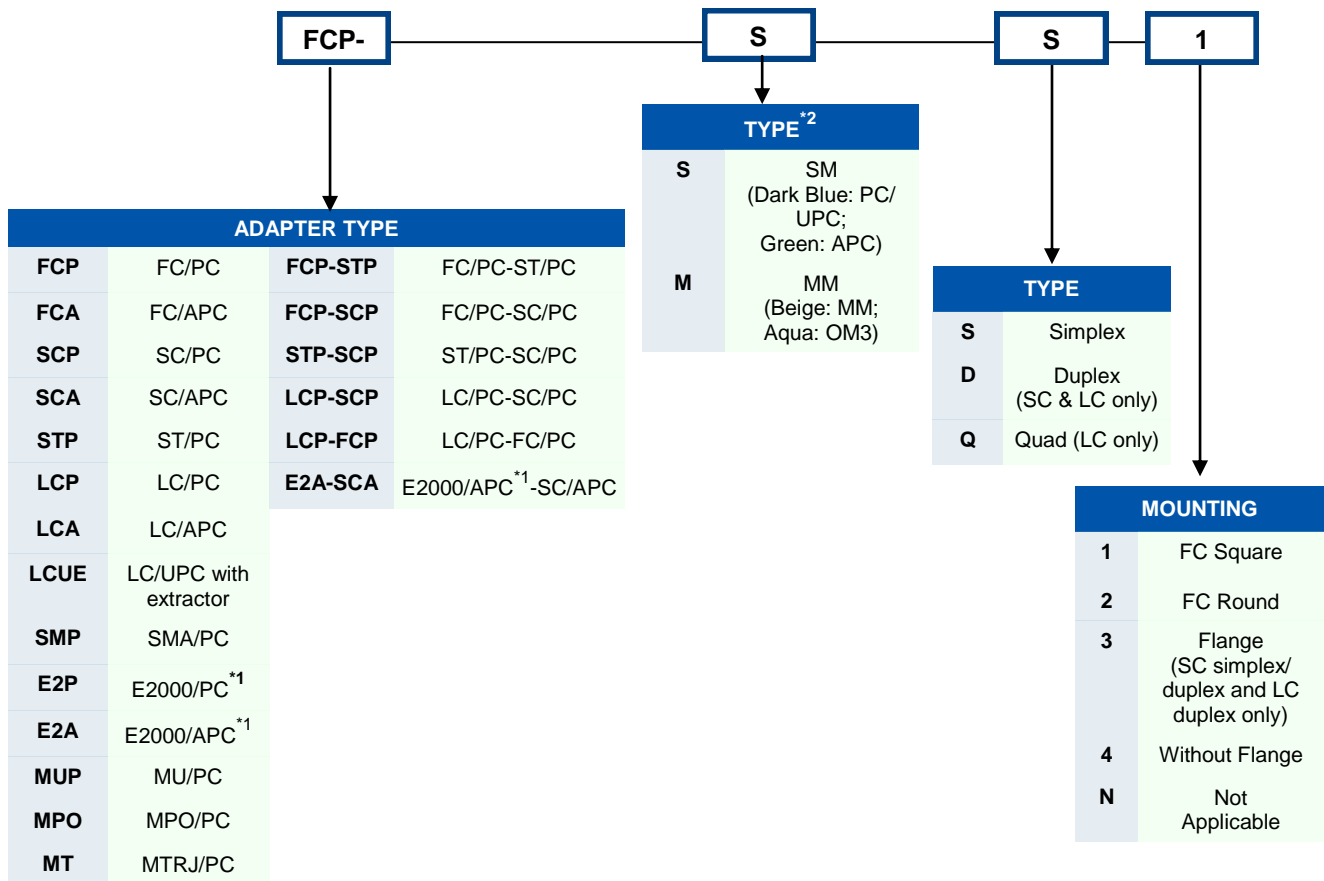
^{*1} Latching mechanism with connectors in accordance with IEC61754-2 for ST connectors; -4 for SC connectors; -6 for MU connectors; -7 for MPO/MTP connectors; -13 for FC connectors; -15 for E2000 connectors; -20 for LC connectors

SPECIFICATIONS

Endface	PC/APC
Fiber Mode	Single Mode and Multimode
Sleeve Material	Zirconia Ceramic
Adapter housing	Polymeric plastic tested in accordance to IEC60068-2-10 and in compliance with UL94 V-0 Rating Corrosive resistant nickel plated brass material for metal parts
Insert Loss (dB)	≤0.2
Exchangeability (dB)	≤ 0.2 (connect randomly)
Tensile Strength (dB)	≤ 0.2 (0 ~ 100N)
Vibration (dB)	≤ 0.2 (5 ~ 50Hz, 1.5mm Amplitude)
Lifetime (times)	>500 mating (in accordance to IEC 61300-2)
Working Temperature (dB)	≤ 0.2 (-40 ~ 80°C, 21 Cycles)

ORDERING INFORMATION

EXAMPLE : FCP-SS1



Note :

*1: E2000 connector are from SENKO with the license from R&M

*2: Color is only applicable to polymeric material based connector's parts